

Between the Cones

Brought to you by: Langford

"It's all Spoken Here!"



The Official Publication of

Gulfcoast Autocrossers, LTD

"Performance Driving School"

Next Event

June 1st - Test & Tune / Novice School

June 2nd - 2013 Event # 5

2013 Schedule Inside

June 2013

Monday	Tuesday	Wednesday	Thursday	Friday	Saturday	Sunday
					1	2
3	4	5	6	7	8	9
10	11	12	13	14	15	16
17	18	19	20	21	22	23
24	25	26	27	28	29	30



GULFCAST

AUTOCROSSERS LTD.

Gulfcoast Autocrossers, LTD



President Craig Ellis
Vice President Dave Hutter
Treasurer Becky Rash

Mailing Address

C/O Craig Ellis
8341 Arborfield Ct.
Fort Myers, FL 33912
(239) 284-8352
cellis2002@comcast.net

www.gulfcoastautocrossers.com

Event #5, 2013

Event Chairman Craig Ellis
Chief of Timing James Flaumenbaum
Chief of Tech / Safety Steward Mical Fountain
Course Design Craig Ellis
Course Layout "The Crew"
Registration Becky, James, Elizabeth, Joan, Craig
Chief of Workers Mike Lawson
Club Photographer Becky Rash
Food Dave and Mical

Please Remember

The advertisers you see in our program help support our sport. If you need something, please try to patronize the businesses that care about autocrossers.

President's Corner



It's time to revisit **Red Flag** rules.

During our May event, a car broke down and was pushed off to the side. During this situation, subsequent drivers were red flagged. Unfortunately, after being flagged, and stopping, those drivers continued back to the finish line.

When you are red flagged, it is paramount that you stop on the track and stay where you are until you are told to do otherwise. Red flags are very serious situations and we wish to maintain the utmost safety for our course workers and drivers alike.

When under this condition, once you are released, continue quickly to the finish line, crossing through the timing lights. During this trek, make sure you drive on the outside of the track. Do NOT finish the rest of the course. If you do continue to follow the race line, you will be denied your rerun.

Part of this sport is keeping our eyes up at all times. It's critical that you look beyond just your next element and make sure you are aware of all that is taking place on the course as you pass through, be it a flag or simply a course worker in your way.

Craig



October 26-27, 2013
Registration Deadline 9/15/2013

The Ultimate Autocross Learning Experience

Extreme 2-Day School

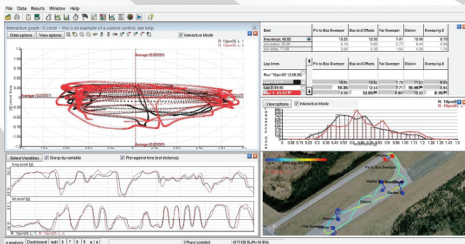
The Extreme class was originally developed several years ago and has since been attracting experienced autocrossers such as National Champions, regional champions, and other experienced drivers looking to squeeze out those last few tenths. The Extreme is geared toward the advanced student who is willing to put forth the extra effort to reach his or her goals. **You must have completed the Intro and Comp classes to attend this school.**

The features of the class include:

- Advanced concepts explained in easy-to-understand terms
 - Multiple course configurations
 - 2-lap format
 - Daily data analysis session w/segment times
 - Determine specific weaknesses and strengths
 - Understand and learn how to maximize the cars potential
 - Data collection session using cutting edge technology* (AX-22 performance computers)**
- *Weather conditions permitting

**Cars must have a working 12V cigarette lighter power port.

In the 2-day Extreme, a multi-lap, multi-day format will give each student the most seat time available at any professional autocross school. In addition to loads of high quality seat time and instruction, a data analysis session is held each day allowing the student to view segment times, braking and acceleration areas, and a detailed analysis of what is working well and what may need some polishing. If you're ready for some serious fun, a ton of seat time, and some in-depth quantitative analysis of your driving - the Extreme is for you!





October 26-27, 2013

Registration Deadline 9/15/2013

Registration Form

Name _____

Phone _____

Email _____

2 Day Extreme \$575 _____

T-Shirt Size S M L XL 2XL 3XL Circle one

Questions, call Dave Hutter (239) 671-9951 or email dhutter@aol.com

Visit www.soloprodrivingschool.com for more info.

Send Payment Today to:
Gulfcoast Autocrossers
19700 Skipper Rd.
North Fort Myers, FL 33917

2013 Trophy Rules

Gulfcoast Autocrossers, LTD



1. The 2013 season will consist of ten events held at Buckingham Airfield.
2. To qualify for year-end class champion, the following requirements must be met:
 - a. Must compete in at least eight events in the 2013 series.
 - b. Must compete in at least eight events in the same car class.
3. At the end of the series, a class champion award will be given to the person with the most points in the class, based on the following:
 - a. Points from the best eight of ten events will be counted
 - b. In the event of a tie, the ninth event will determine the tie breaker.
4. All results and class designations will be final at the end of each event.
5. Points cannot be transferred from one class to another class.
(Note: It is the driver's responsibility to know what class they belong in)

Business Owners...

Don't you think your business should be advertised here?

Call today. (239) 284-8352



★ ★ ★ ★ ★
LANGFORD



LaBELLE

"We all Spoken Here!"

Welcome to Langford Ford! Located in LaBelle, FL, Langford Ford is proud to be one of the premier dealerships in the area. From the moment you walk into our showroom, you'll know our commitment to Customer Service is second to none. We strive to make your experience with Langford Ford a good one – for the life of your vehicle.

Whether you need to Purchase, Finance, or Service a New or Pre-Owned Ford, you've come to the right place.

Call 888-340-9590 for your No-Obligation Internet Price Quote from our Internet Department.



New: (888) 340-9590
Used: (888) 364-8105
Parts: (888) 306-8412
Service: (888) 364-3271



SVT™

SPECIAL VEHICLE TEAM

IL Primo PIZZA & WINGS



KID'S NIGHT



**MAKE YOUR
OWN PIZZA*
EVERY WEDNESDAY**

\$4

Kid's Mini Pizza* &
Kid's Drink

Only
*Pepperoni and Cheese Included
(Additional Toppings \$0.50 Extra)

PROUDLY SERVING



Monday & Tuesday
MEDIUM CHEESE PIZZA
OR
SMALL WINGS
ONLY

\$6

**THERE'S ALWAYS A
REASON TO CELEBRATE**

**IL Primo
PIZZA & WINGS**

IS THE PLACE TO DO IT!

Have Your Party Here!
Birthdays Graduations Victories Showers

ilprimopizza.com

**IL Primo
PIZZA & WINGS**

**Pizza • Wings • Salads
Beer • Wine**

Eat In • Take Out

Sun-Thurs: 10:30 am - 10:00pm
Fri-Sat: 10:30 am - 11:00pm

ilprimopizza.com

**Corner of Lee Blvd. & Hwy 82
(In Public Plaza)
5781 Lee Blvd
(239) 344-4457**

Event #4, 2013 Results

STF - 'Street Touring FWD' - Total Entries: 3 Trophies: 1									
				Times					Total
1T	STF 771	ANDRES RODRIGUEZ	2012 MAZDA 2	88.052	84.273+1	84.113	83.618+3	83.304	83.304
									[-]3.824
2	STF 129	RYAN YOUNG	FORD FOCUS ST	91.819+OC	88.553+1	88.658+2	87.128	88.461+1	87.128
									3.824
3	STF 239	ALEX NOVA	HYUNDAI VELOSTER	95.011+OC	94.297+OC	93.953	92.709	93.402	92.709
									5.581
STFL - 'Street Touring Ladies' - Total Entries: 1 Trophies: 1									
				Times					Total
1T	STFL 128	KALAH KROUTH	FORD FOCUS ST	101.531	96.108	95.331	92.153	91.809	91.809
									-
STS - 'Street Touring (Tire)' - Total Entries: 5 Trophies: 2									
				Times					Total
1T	STS 494	ROBERT SADOWSKI	92 MIATA	85.056	84.844	84.08	83.512	83.492+1	83.512
									[-]3.239
2T	STS 787	CHARLENE WALKER		87.908	87.521	87.944	86.751		86.751
									3.239
3	STS 711	MICHAEL GRANOBLES	1993 MAZDA MIATA	97.877+1	87.639	87.583	97.352+OC	88.158	87.583
									0.832
4	STS 722	BO RAMBO	89 HONDA CRX/SI	108.637	102.906	97.824	99.063+2	98.875	97.824
									10.241
5	STS 776	JANA HAWLEY	1989 HONDA CRX	112.336	102.702	99.407	92.861+5	99.486	99.407
									1.583
STR - 'Street Touring R' - Total Entries: 4 Trophies: 2									
				Times					Total
1T	STR 156	TERRY MCINTYRE	S2000	81.610+OC	83.042	82.275	98.417	81.070+1	82.275
									[-]0.956
2T	STR 384	SEAN COOPER	HONDA S2000 2005	84.633+1	83.217+1	82.268+1	83.231	82.096+1	83.231
									0.956
3	STR 651	MIKE BURITICA	04 HONDA S2000	92.562+1	88.865	89.18	82.010+1	88.929	84.01
									0.779
4	STR 59	DAVID SMITH	HONDA S2000	87.507	87.397	87.287	87.506	86.595	86.595
									2.585
STX - 'Street Touring X' - Total Entries: 1 Trophies: 1									
				Times					Total
1T	STX 371	KYLE YOUNGER	01 BMW 330i	87.039+OC	87.868+2	86.097	86.779+3	86.732	86.097
									-
STU - 'Street Touring U' - Total Entries: 2 Trophies: 1									
				Times					Total
1T	STU 204	BEN LEVY	06 STI SUBARU	84.371	82.561	83.003	83.275+1	81.589	81.589
									[-]1.061
2	STU 908	LAUREN DIRUZZO	SUBARU	84.292	84.474+1	82.707	82.65	81.852+1	82.65
									1.061
SM - 'Street Modified' - Total Entries: 2 Trophies: 1									
				Times					Total
1T	SM 193	TOM MAYO	EVO	81.419	79.666	227.791+OC	78.936+1	79.399	79.399
									[-]2.300
2	SM 800	JOHN CONROY	06 MITS LANCER EVOLUTION	83.485+1	82.203	83.629	81.985	81.699	81.699
									2.3
SMF - 'Street Modified F' - Total Entries: 1 Trophies: 1									
				Times					Total
1T	SMF 87	FRANCHOT PALMA	2001 ACURA INTEGRA	88.530+OC	89.146+OC	86.737	85.767	87.084+OC	85.767
									-
SSM - 'Street Modified M' - Total Entries: 2 Trophies: 1									
				Times					Total
1T	SSM 401	JOSEPH WRGHT	2000 MAZDA MX5 MIATA	79.465+1	80.023+1	79.038	78.306	77.868	77.868
									[-]6.116
2	SSM 73	JEFF MCGRATH	'90 MAZDA MIATA	86.425	83.984	88.675+OC	85.323+1	84.907	83.984
									6.116
SSN - 'Super Stock Novice' - Total Entries: 1 Trophies: 1									
				Times					Total
1T	SSN 167	DAVE WAINSCOTT	CORVETTE	103.230+1	102.342+OC	98.094+1	98.416+OC	100.782	100.094
									-
SSNL - 'Super Stock Novice Ladies' - Total Entries: 1 Trophies: 1									
				Times					Total
1T	SSNL 267	TINA WAINSCOTT	CORVETTE	115.276+OC	115.525	112.442	108.970+OC	108.84	108.84
									-
ASN - 'A Stock Novice' - Total Entries: 2 Trophies: 1									
				Times					Total
1T	ASN 282	BARRETT WAINSCOTT III	2000 CORVETTE	100.462	127.613+OC	93.863	93.148	92.452	92.452
									[-]0.687
2	ASN 82	BARRETT WAINSCOTT	00 CHEV CORVETTE	99.101	96.364	94.469	93.139	95.033	93.139

Event #4, 2013 Results

BSN - 'B Stock Novice' - Total Entries: 1 Trophies: 1				Times				Total		
1T	BSN	12	VANCE BROWNE	HONDA S2000	98.284+1	94.223+OC	93.678+OC	92.978	93.817+OC	92.978
										-
CSN - 'C Stock Novice' - Total Entries: 1 Trophies: 1				Times				Total		
1T	CSN	222	DUNCAN ENNIS	13 SCION FRS	96.324	92.713+2	95.674	94.755	109.761	94.755
										-
DSN - 'D Stock Novice' - Total Entries: 2 Trophies: 1				Times				Total		
1T	DSN	559	PHIL CHUN	SUBARU WRX	107.968	95.436	92.883	93.349+OC		92.883
										-0.659
2	DSN	556	SUSAN CHUN	SUBARU WRX	103.629+OC	98.32	93.029+OC	93.542	96.151+OC	93.542
										0.659
ESN - 'E Stock Novice' - Total Entries: 1 Trophies: 1				Times				Total		
1T	ESN	113	JOHN HUNT	MAZDA MIATA	123.986		118.685			118.685
										-
FSN - 'F Stock Novice' - Total Entries: 1 Trophies: 1				Times				Total		
1T	FSN	220	BRIAN STROMLUND	MUSTANG 2008 GT	99.306	94.65	94.92	94.712+1	93.345+1	94.65
										-
PRO - 'PRO Class' - Total Entries: 7 Trophies: 3				Times				Total		
1T	STR	97	DARRIN DISIMO	S2000	79.992	80.571	79.903	80.325	79.156	66.411
										-0.351
2T	SS	95	DAVID LEHMAN	2010 PORSCHE GT3	77.721	87.415	77.877	77.799	77.835	66.762
										0.351
3T	SS	586	CRAIG ELLIS	08 CHEVROLET CORVETTE Z06	79.027	78.258	77.949+1	79.708+1	78.685	67.223
										0.461
4	CSP	15	HECTOR SAN NICOLAS	MAZDA MIATA	80.217+2	78.403	79.130+1	79.108+1	78.728+1	67.505
										0.282
5	STX	333	TEDDIE ALEXANDROVA	05 Mazda RX8	83.133	83.142	83.695	83.523	82.325	68.082
										0.577
6	CSP	115	RACER X	MIATA	99.133+7	81.317+1	78.154+3	80.144+2	77.880+1	68.776
										0.694
7	HS	247	KEITH ROBERTSON	1993 BMW 318i	87.47	85.455+1	87.651	85.811	84.961+1	68.992
										0.216





For complete results, please visit:
www.gulfcoastautocrossers.com

! Number Warning !

8" 586 SSP 4"

Numbers must be readable and correct. We follow SCCA standards when it comes to numbering standards. Your numbers should be a minimum of 8" tall, with a bold stroke, no less than 1.25" thick. Class letters must be a minimum of 4" tall with a 0.75" stroke. Additionally, the colors selected should be of high-contrast as compared to your car color. They should be easily readable from the timing and scoring RV.

Shoe polish and tape numbers ARE NOT PERMITTED. You must have your car number, and class letters installed, before tech inspection. Paper numbers and class letters are available for sale in the tech area.

"We all Spoken Here!"



★ ★ ★ ★ ★
LANGFORD



LaBelle

Ole Bell says...

It's Langford Ford for those Good Old Country Deals.

Always a great selection of new & used cars and trucks.

Sales, Service, Leasing, Rentals

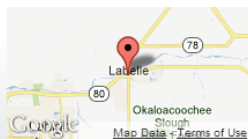


2013 Shelby GT500



2013 Focus ST

MAP & LOCATION



DEALER ADDRESS

Langford Ford
851 S Main St
LaBelle, FL 33935
888-340-9590

New: (888) 340-9590
Used: (888) 364-8105
Parts: (888) 306-8412
Service: (888) 364-3271

2013 Schedule

June 1st - Test & Tune / Novice School
June 2nd - Event #5

June 22nd - Test & Tune / Novice School
June 23rd - Event #6

Summer Break

Aug. 24th - Test & Tune / Novice School
Aug. 25th - Event #7

Oct. 5th - Test & Tune / Novice School
Oct. 6th - Event #8 *Bay Bottom Crawl Warmup*

Oct. 26-27 SoloPro Extreme School

Nov. 2nd - Test & Tune / Novice School
Nov. 3rd - Event #9

Dec. 7th - Test & Tune / Novice School
Dec. 8th - Event #10 *Season Finale*



Mufflers Required



Mufflers with baffles are required to keep your car at a reasonable sound level. The people who live around the site have to listen to us for 2 days. If our neighbors start complaining we could lose the site. Do you want to be the person responsible for this??

Remember, if you think it might be too loud, it probably is. Please keep it as quiet as possible.